

### Fonction :

This anchorage point, tested in accordance with EN795:2012 in two directions can be used to secure a single user.

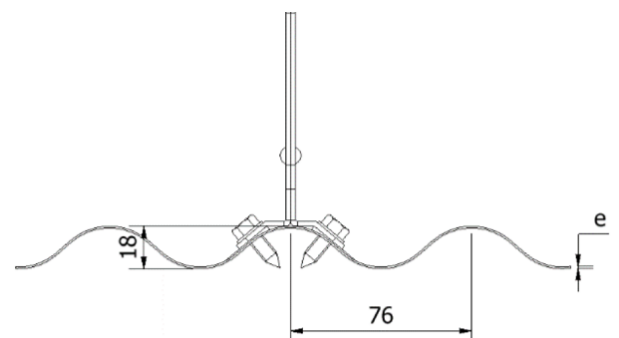
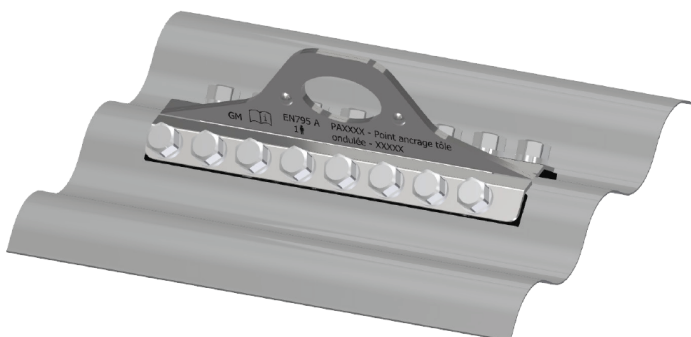
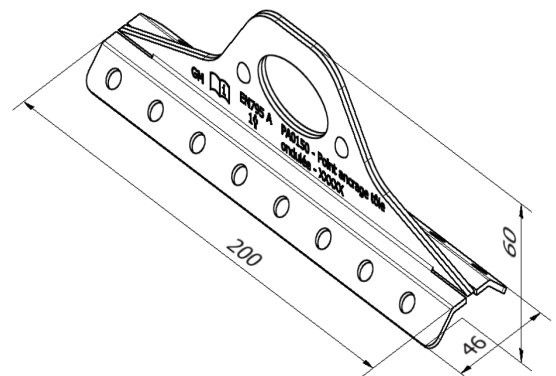
The anchor ring is designed to be fastened with 16 Ø6.3X38 auto-drilling screws.

Reference : PNC0121

Matériau : Stainless steel

Poids : 300g

Traitement : Electro-polishing

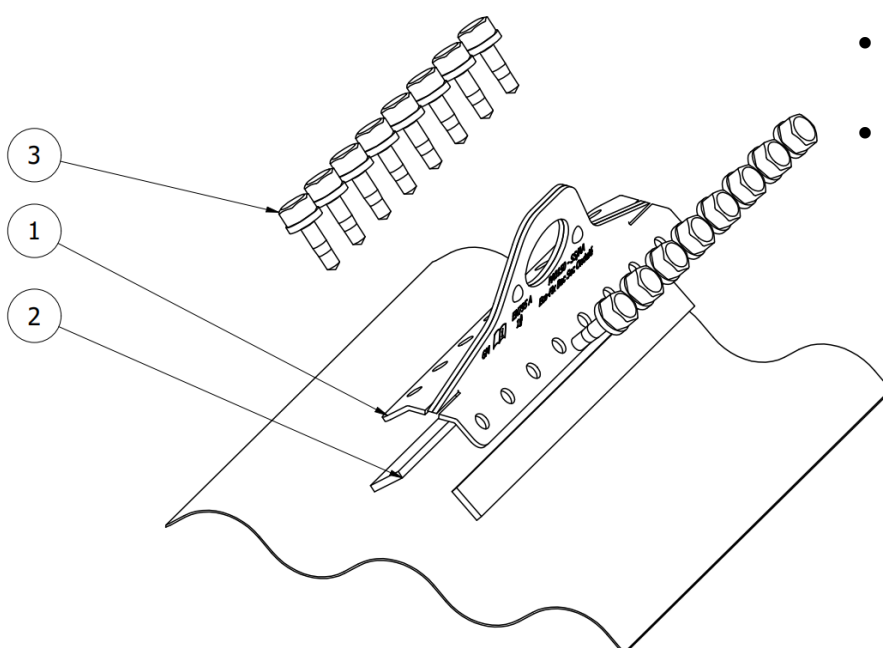
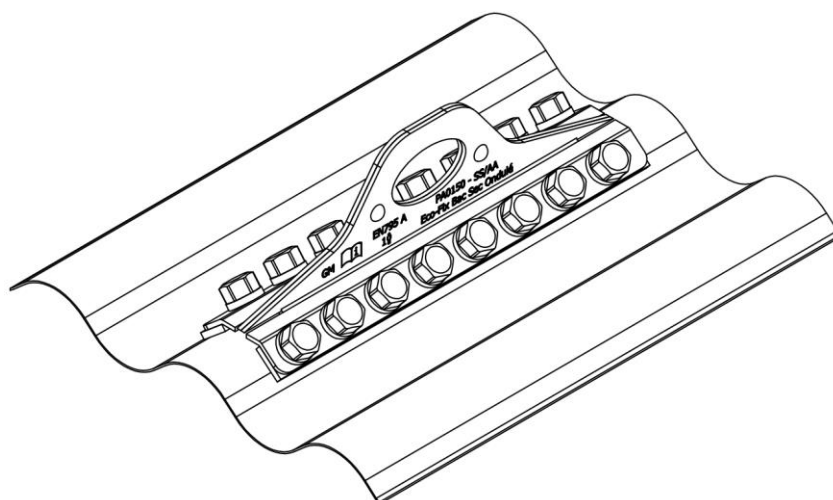


Fixation :

Steel  
 $e > 0.5\text{mm}$   
 16 auto-drilling screws  
 6.3X38

# MOUNTING INSTRUCTIONS

## CORRUGATED STEEL SHEET ANCHOR RING - PNC0121



- Stick adhesive soles under the anchor ring.
- Fix the anchor ring to one wave of the corrugated steel sheet with Ø6.3x22 self-drilling screws.

Reference	Quantity	Designation	Product code
1.	X1 per fixing	Corrugated steel sheet Anchor Ring	PA0150
2.	X2 per anchor ring	Adhesive soles	PA0090
3.	X2 per anchor ring	Ø6.3x22 self-drilling screw	VIS0118



**Use only screws supplied by GM.**